

- H300
- H400
- HC450
- HC450I
- HC500
- HC500I
- HC500SI
- HC530
- HC550
- HC550I
- HC570I
- HC580

HAWK
Pompe MT serie 2003
MT pumps 2003 series

PARTS LIST


MT pumps 2003 series


Item	Part Number	Description	Q.ty by Pump	H300	H300RL	H400	H400RL	HC450	HC450RL	HC450IRL	HC500	HC500RL	HC500IRL	HC500SIRL	HC530RL	HC550	HC550IRL	HC570IRL	HC580RL
1	0202.11	Crankcase	1	®	®	®	®	®	®		®	®			®	®			®
	0202.13	Crankcase	1							®			®	®			®	®	
2	0602.01	Plunger guide	3																
*3	0001.03	Plunger oil seal	3																
*4	0601.07	"O" Ring Ø1.78x31.47	3																
*5	0002.05	"V" seal, dia.20mm	6	®	®	®	®	®	®	®	®	®	®	®	®	®	®	®	®
*6	1201.04	Pressure ring 20mm	3																
*7	0300.09	Support ring 20mm	6																
*8	0300.08	Intermed. ring 20mm	3																
*9	1601.17	Brass plug G3/8	1	®	®	®	®	®	®	®	®	®	®						
	1601.20	Brass plug G1/2	1											®	®	®	®	®	®
*10	0603.06	Copper washer	1	®	®	®	®	®	®	®	®	®	®						
	0603.07	Copper washer	1											®	®	®	®	®	®
*11	1602.04	Manifold housing	1	®	®	®	®	®	®	®	®	®	®						
	1602.05	Manifold housing	1											®	®	®	®	®	®
*12	0601.19	"O" Ring Ø2.62x17.13	6																
*13	3604.70	Valve assembly	6																
*14	0601.65	"O" Ring Ø2.62x20.29	6	®	®	®	®	®	®	®	®	®	®	®	®	®	®	®	®
*15	1601.30	Valve plug	6																
16	1801.04	Manifold stud bolt	8																
17	1400.01	Washer	∩	8	8	8	8	8	8	16	8	8	16	16	8	8	16	16	8
	1400.02	Washer	8	®	®	®	®	®	®		®	®			®	®			®
*18	0603.06	Copper washer	1																
*19	1601.17	Brass plug G3/8	2																
20	1503.18	Valve seat	6	®	®	®	®	®	®	®	®	®	®	®	®	®	®	®	®
21	1202.00	Valve plate	6																
22	0900.30	Valve spring	6																
23	0604.05	Valve cage	6																
24	1802.07	Hexagonal screw	8	®	®	®	®	®	®		®	®			®	®			®
	1801.19	Hexagonal screw	8							®			®	®			®	®	
25	0500.27	Bearing housing	∩	2	1	2	1	2	1		2	2			2	1			1
	0500.28	Bearing housing							1				1	1			1	1	
26	0500.29	Closed bearing housing	1		®		®		®										®
	0500.30	Closed bearing housing	1						®				®	®					®
27	0601.63	"O" Ring Ø2.62x60,05	2	®	®	®	®	®	®	®	®	®	®	®	®	®	®	®	®
28	0001.02	Crankshaft seal	∩	2	1	2	1	2	1	1	2	1	1	1	1	2	1	1	1
29	0200.03	Roller bearing	2	®	®	®	®	®	®	®	®	®	®	®	®	®	®	®	®
30	0004.01	Double-ended shaft	1			®													
	0004.04	" " "	1								®								
	0004.07	" " "	1	®												®			
	0004.08	" " "	1					®											
31	0004.06	Single - ended shaft	1									®							
	0004.10	" " "	1						®										
	0004.11	" " "	1				®												®
	0004.12	" " "	1		®														
	0004.50	" " "	1														®		
	0004.56	" " "	1							®									
	0004.57	" " "	1										®	®					
	0004.79	" " "	1												®				
0004.82	" " "	1																®	
32	0206.00	Crankshaft key	1	®	®	®	®	®	®	®	®	®	®	®	®	®	®	®	®
33	1600.02	Oil dip stick	1																

PARTS LIST

MT pumps 2003 series

Item	Part Number	Description	Q.ty by Pump	H300	H300RL	H400	H400RL	HC450	HC450RL	HC450IRL	HC500	HC500RL	HC500IRL	HC500SIRL	HC530RL	HC550	HC550IRL	HC570IRL	HC580RL	
34	0301.02	Shim	1																	
*35	1800.01	Plunger bolt	3																	
*36	1400.12	Copper spacer	3																	
*37	0601.03	"O" Ring Ø1.78x7.66	3																	
*38	0009.04	Teflon ring	3																	
*39	1200.10	Plunger 20mm	3																	
*40	1400.15	Copper spacer	3																	
41	0003.01	Plunger rod	3																	
42	0100.01	Connecting rod	3	®	®	®	®	®	®	®	®	®	®	®	®	®	®	®	®	®
43	1502.01	Connecting rod pin	3																	
44	1801.05	Connecting rod screw	6																	
45	1500.01	Snap ring	6																	
46	1401.02	Spring washer	6																	
47	0600.09	Cover gasket	1																	
48	0203.17	Crankcase cover	1																	
49	0603.02	Gasket, G3/8	1																	
50	0700.01	Sight glass, G3/8	1																	
51	1801.12	Cover screw	5																	



 Part available in kit only



 Part available in kit also

SPARE PARTS KIT

Included Positions	Part Number & Description	Q.ty by Pump	H300	H300RL	H400	H400RL	HC450	HC450RL	HC450IRL	HC500	HC500RL	HC500IRL	HC500SIRL	HC530RL	HC550	HC550IRL	HC570IRL	HC580RL		
4- 5- 7	2608.01 Plunger Seals 20mm	1																		
3- 4- 5- 6- 7- 8	2608.00 Complete Seals Packing 20mm	3																		
35- 36- 37- 38 39- 40	2608.02 Plunger 20mm	3	®	®	®	®	®	®	®	®	®	®	®	®	®	®	®	®	®	®
12- 13- 14	2600.08 Complete Valve	6																		
3	2608.03 Plunger oil Seals	1																		
4- 5- 6- 7- 8- 9 10- 11- 12- 13	2608.13 Complete Manifold	1	®	®	®	®	®	®	®	®	®	®								
14- 15- 18- 19	2608.14 Complete Manifold	1											®	®	®	®	®	®	®	®

Pos.	Codice	Descrizione	Q.tà per Pompa	H300	H300RL	H400	H400RL	HC450	HC450RL	HC450IRL	HC500	HC500RL	HC500IRL	HC500SIRL	HC530RL	HC550	HC550IRL	HC570IRL	HC580RL
34	0301.02	Distanziale	1																
*35	1800.01	Vite pistone	3																
*36	1400.12	Rosetta rame	3																
*37	0601.03	"O" Ring Ø1.78x7.66	3																
*38	0009.04	Anello antiestrusione	3																
*39	1200.10	Pistone Ø20	3																
*40	1400.15	Rosetta rame	3																
41	0003.01	Asta pistone	3																
42	0100.01	Biella completa	3	®	®	®	®	®	®	®	®	®	®	®	®	®	®	®	®
43	1502.01	Spinotto	3																
44	1801.05	Vite M6x25	6																
45	1500.01	Anello Ø10	6																
46	1401.02	Rosetta elastica Ø6	6																
47	0600.09	Guarnizione coperchio	1																
48	0203.17	Coperchio	1																
49	0603.02	Guarnizione G3/8	1																
50	0700.01	Spia livello olio G3/8	1																
51	1801.12	Vite M6x16	5																

  Particol. disponibile solo in kit

  Particol. disponibile anche in kit

KIT RICAMBI

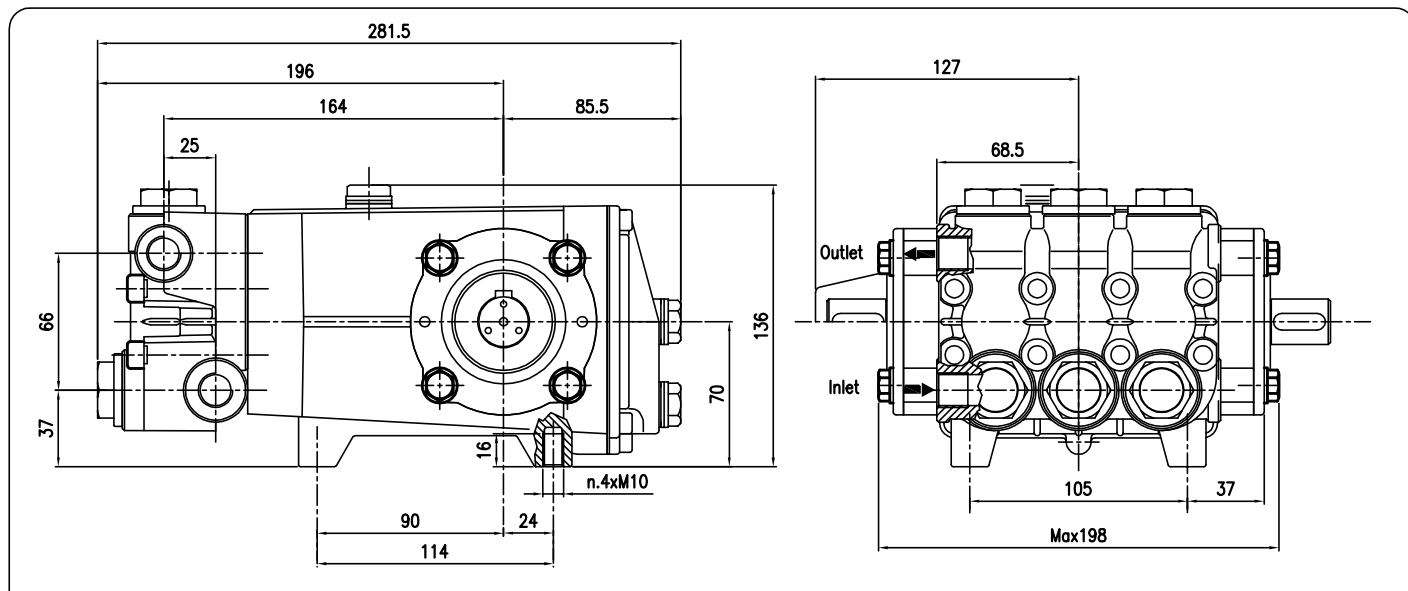
Posizioni incluse	Codice e Descrizione	Q.tà per Pompa	H300	H300RL	H400	H400RL	HC450	HC450RL	HC450IRL	HC500	HC500RL	HC500IRL	HC500SIRL	HC530RL	HC550	HC550IRL	HC570IRL	HC580RL	
4- 5- 7	2608.01 Guarnizioni pistone Ø20	1																	
3- 4- 5- 6- 7- 8	2608.00 Pacco completo Guarnizioni pistone Ø20	3																	
35- 36- 37- 38 39 40	2608.02 Pistone Ø20	3	®	®	®	®	®	®	®	®	®	®	®	®	®	®	®	®	®
12- 13- 14	2600.08 Valvola completa	6																	
3	2608.03 Anelli tenuta olio Asta	1																	
4- 5- 6- 7- 8- 9 10- 11- 12- 13 14- 15- 18- 19	2608.13 Testata Completa	1	®	®	®	®	®	®	®	®	®	®							
	2608.14 Testata Completa	1										®	®	®	®	®	®	®	®

Pos.	Codice	Descrizione	Q.tà per Pompa	H300	H300RL	H400	H400RL	HC450	HC450RL	HC450IRL	HC500	HC500RL	HC500IRL	HC500SIRL	HC530RL	HC550	HC550IRL	HC570IRL	HC580RL
1	0202.11	Carter	1	®	®	®	®	®	®	®	®	®	®	®	®	®	®	®	®
	0202.13	Carter	1							®			®	®			®	®	
2	0602.01	Guida asta pistone	3																
*3	0001.03	Anello radiale	3																
*4	0601.07	"O" Ring Ø1.78x31.47	3																
*5	0002.05	Anello tenuta "V" Ø20	6	®	®	®	®	®	®	®	®	®	®	®	®	®	®	®	®
*6	1201.04	Pressore Ø20	3																
*7	0300.09	Diffusore Ø20	6																
*8	0300.08	Diffusore Interm. Ø20	3																
*9	1601.17	Tappo G3/8	1	®	®	®	®	®	®	®	®	®	®						
	1601.20	Tappo G1/2	1											®	®	®	®	®	®
*10	0603.06	Guarnizione rame	1	®	®	®	®	®	®	®	®	®	®						
	0603.07	Guarnizione rame	1											®	®	®	®	®	®
*11	1602.04	Testata	1	®	®	®	®	®	®	®	®	®	®						
	1602.05	Testata	1											®	®	®	®	®	®
*12	0601.19	"O" Ring Ø2.62x17.13	6																
*13	3604.70	Valvola premontata	6																
*14	0601.65	"O" Ring Ø2.62x20.29	6	®	®	®	®	®	®	®	®	®	®	®	®	®	®	®	®
*15	1601.30	Tappo valvola	6																
16	1801.04	Vite M8x65	8																
17	1400.01	Rosetta Ø8.5	Ū	8	8	8	8	8	8	16	8	8	16	16	8	8	16	16	8
	1400.02	Rosetta Ø6.4	8	®	®	®	®	®	®		®	®			®	®			®
*18	0603.06	Guarnizione rame	1																
*19	1601.17	Tappo G3/8	2																
20	1503.18	Sede valvola	6	®	®	®	®	®	®	®	®	®	®	®	®	®	®	®	®
21	1202.00	Piattello valvola	6																
22	0900.30	Molla valvola	6																
23	0604.05	Gabbia valvola	6																
24	1802.07	Vite M6x18	8	®	®	®	®	®	®		®	®			®	®			®
	1801.19	Vite M8x18	8							®			®	®			®	®	
25	0500.27	Flangia	Ū	2	1	2	1	2	1		2	2			2	1			1
	0500.28	Flangia							1				1	1			1	1	
26	0500.29	Flangia chiusa	1		®		®		®							®			®
	0500.30	Flangia chiusa	1						®			®	®				®	®	
27	0601.63	"O" Ring Ø2.62x60,05	2	®	®	®	®	®	®	®	®	®	®	®	®	®	®	®	®
28	0001.02	Anello radiale	Ū	2	1	2	1	2	1	1	2	1	1	1	1	2	1	1	1
29	0200.03	Cuscinetto a rulli	2	®	®	®	®	®	®	®	®	®	®	®	®	®	®	®	®
30	0004.01	Albero doppia P.d.F.	1			®													
	0004.04	" " "	1								®								
	0004.07	" " "	1	®												®			
	0004.08	" " "	1					®											
31	0004.06	Albero semplice P.d.F.	1									®							
	0004.10	" " "	1						®										®
	0004.11	" " "	1				®												
	0004.12	" " "	1		®														
	0004.50	" " "	1														®		
	0004.56	" " "	1							®									
	0004.57	" " "	1									®	®						
	0004.79	" " "	1												®				
0004.82	" " "	1																®	
32	0206.00	Chiavetta	1	®	®	®	®	®	®	®	®	®	®	®	®	®	®	®	®
33	1600.02	Tappo livello olio	1																

Pump Pompe Pumpen Pompa	Pressure Pression Druck Pressione		Volume Débit Leistung Portata		RPM tours/min u.p.m. giri/min	Required HP Puissance HP Leistung HP Potenza HP	Inlet port Entrée Eingang Aspirazione	Outlet Sortie Ausgang Mandata	Weight Kg Poids Kg Gewicht Kg Peso Kg
	bar	PSI	l/min	GPM					
H300	200	3000	12.5		1000	6.4	G 3/8	G 3/8	10
				4.0	1200	7.7			
H400	200	3000	15.0		1000	7.7	G 3/8	G 3/8	10
				4.8	1200	9.2			
HC450-HC450I	200	3000	12.5		1450	6.4	G 3/8	G 3/8	10
				4.0	1725	7.7			
HC500-HC500I	200	3000	15.0		1450	7.7	G 3/8	G 3/8	10
				4.7	1725	9.2			
HC500SI	200	3000	15.0		1450	7.7	G 1/2	G 3/8	10
				4.7	1725	9.2			
HC530	200	3000	16		1450	8.2	G 1/2	G 3/8	10
				5.0	1725	9.7			
HC550-HC550I	200	3000	18		1450	9.2	G 1/2	G 3/8	10
				5.6	1725	11.0			
HC570I	200	3000	21		1450	10.7	G 1/2	G 3/8	10
				6.5	1725	12.7			
HC580	200	3000	21.5		1450	11.0	G 1/2	G 3/8	10
				6.75	1725	13.1			

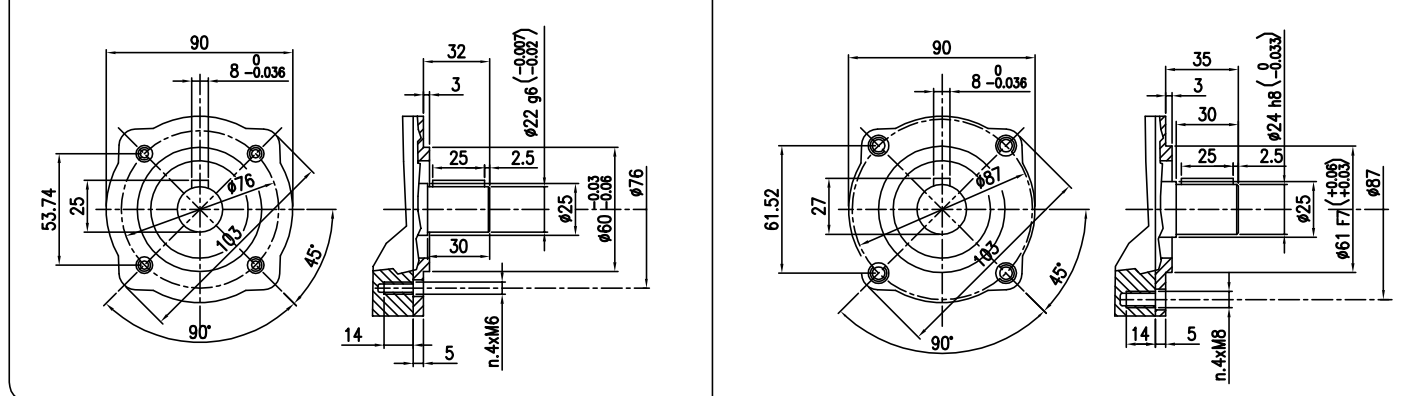
Dimensioni d'ingombro

Overall dimensions



H300-H400-HC450-HC500-HC530-HC550-HC580

HC450I-HC500I-HC500SI-HC550I-HC570I



Lubrificazione: Olio SAE 20/40W
Capacità 0.7 Litri

Lubrication: SAE 20/40W Oil
Capacity 0.7 Litri